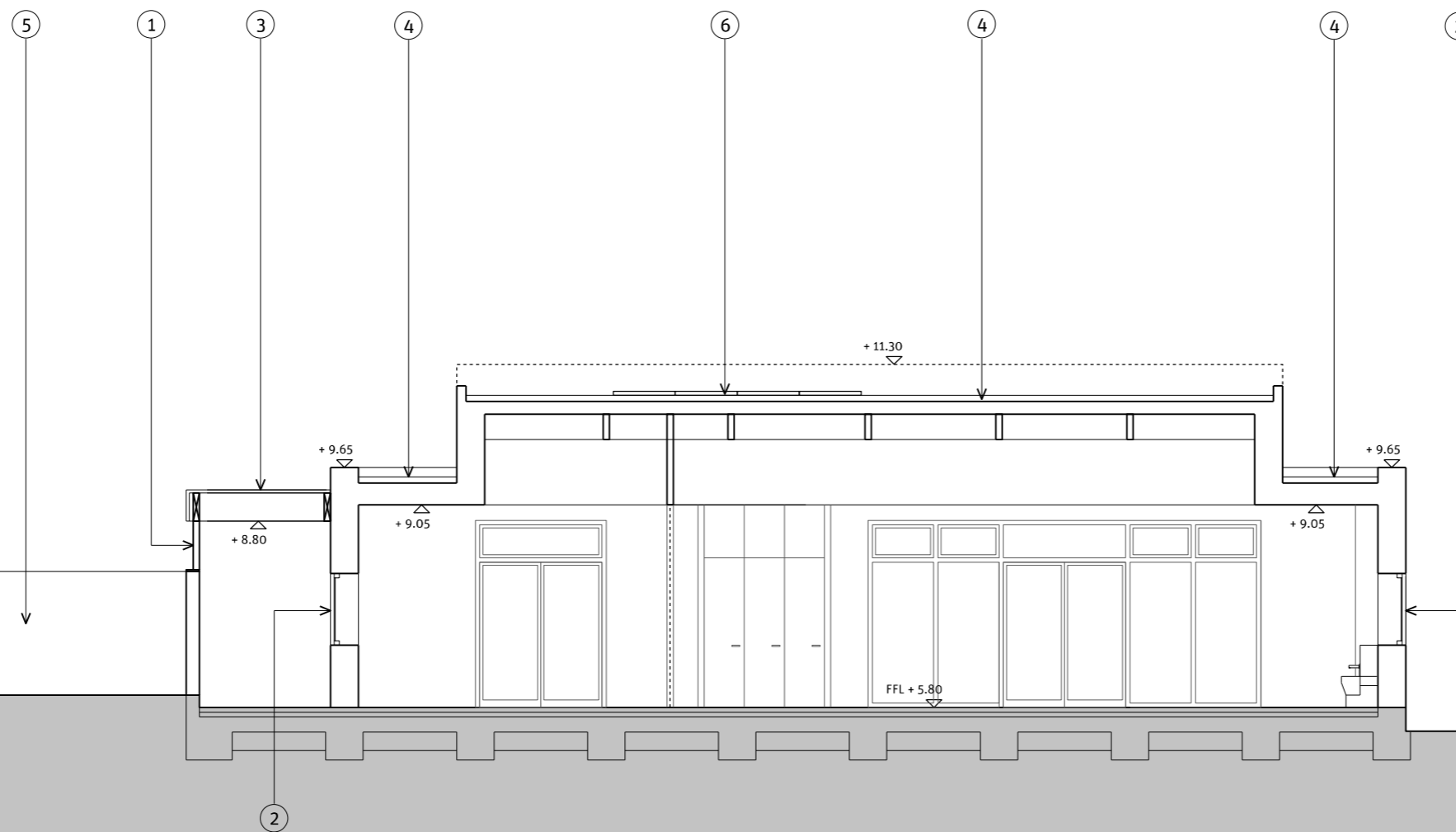


KEY

- 1. Polyester Powdercoated Perforated Metal Panel(Colour tbc)
- 2. Polyester Powdercoated Aluminium Windows (Frame Colour tbc)
- 3. Canopy with Metal Flashing
- 4. Green Roof
- 5. Brick Wall to Gardens
- 6. Photovoltaic Panels



Garden Wall of Proposed Housing

External

Childcare Area 2

Childcare Area 1

Passageway

10-12 Centurion Close

Entrance
Corridor

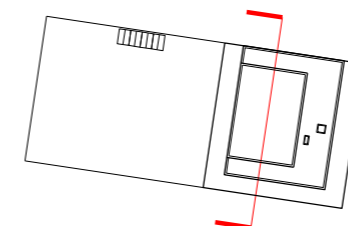
General Notes:

- 1. All dimensions to be checked on site.
- 2. Do not scale from this drawing.
- 3. Drawing to be read in conjunction with all other relevant Figure/Ground Architects and consultant information.
- 4. Do not measure dimensions directly from electronic drawings and only use annotated dimensions provided by Figure/Ground Architects as part of the original hard copy prints.

Copyright:

Neither this document or any information it contains may be copied or communicated to third parties without written permission from Figure/Ground Architects dimensions directly from electronic drawings and only use annotated dimensions provided by Figure/Ground Architects as part of the original hard copy prints.

Rev	Notes	BY	Check	Date



figure/ground
architects

5-8 Crown Works, Temple Street,
London, E2 6QQ
Tel +44(0)203 774 6390
enquiries@figureground-architects.com
www.figureground-architects.com

Drawing Status: **Planning Application**

Project: **Friars Library Site**
Drawing Title: **Nursery: Section B-B (South-North)**

job no.	drawing no.	revision	stage
729	P_735	-	3
scale	size	drawn	date
1:100	A3	LW	9 December 2016